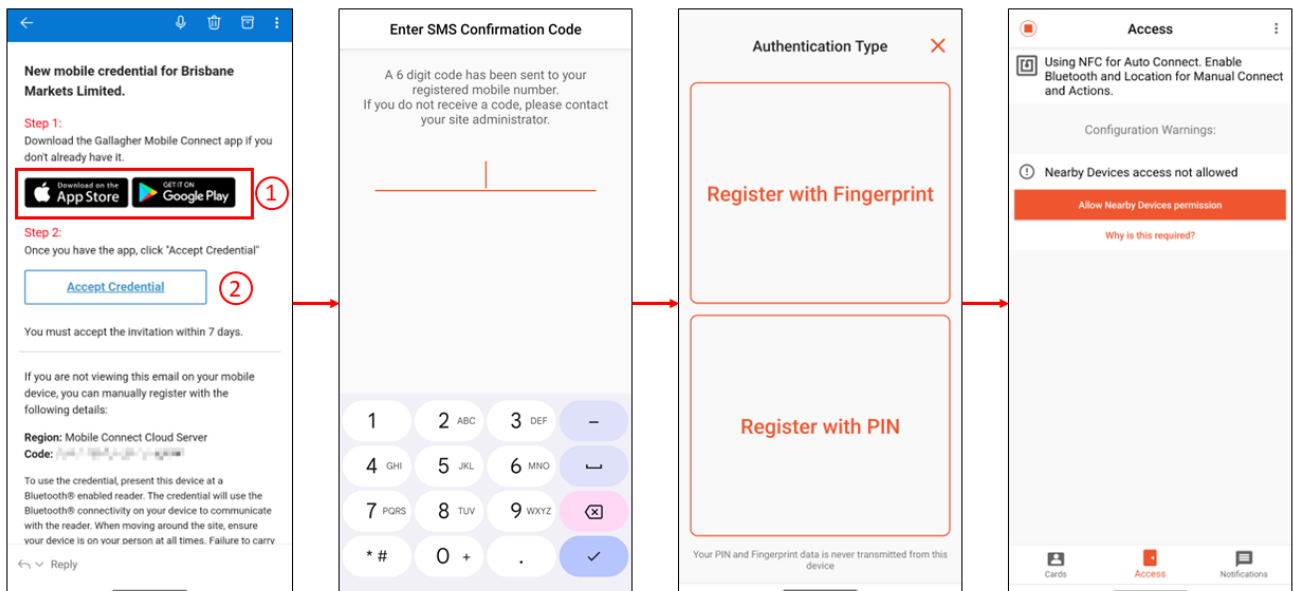


Gallagher Mobile Connect

Gallagher Mobile Connect allows you to use your mobile device as a Virtual Access Card. The App uses your phone's Bluetooth capability to directly interact with the access-controlled doors and gates at Brisbane Markets. Use of the Gallagher Mobile Connect app is currently open to Labour Hire staff.

Setting up the Gallagher Mobile Connect app is simple:

1. Register for your Virtual Access Card via BML's Site Service Centre. Once registered, you will receive an email invitation from no-reply@security.gallagher.cloud to setup Gallagher Mobile Connect on your mobile device.
2. Download the Gallagher Mobile Connect app from your phone's app store (a link will be in the email).
3. Accept the invitation in the email by clicking the Accept Credential button, which will link your phone to your BML access profile.
4. A six-digit code will be sent via SMS to verify your identity.
5. Set a PIN or biometric access for in-app security.
6. Ensure that you allow Bluetooth and location access permissions to the app. This is necessary for the app to detect nearby doors.
7. Registration complete.



Using Gallagher Mobile Connect

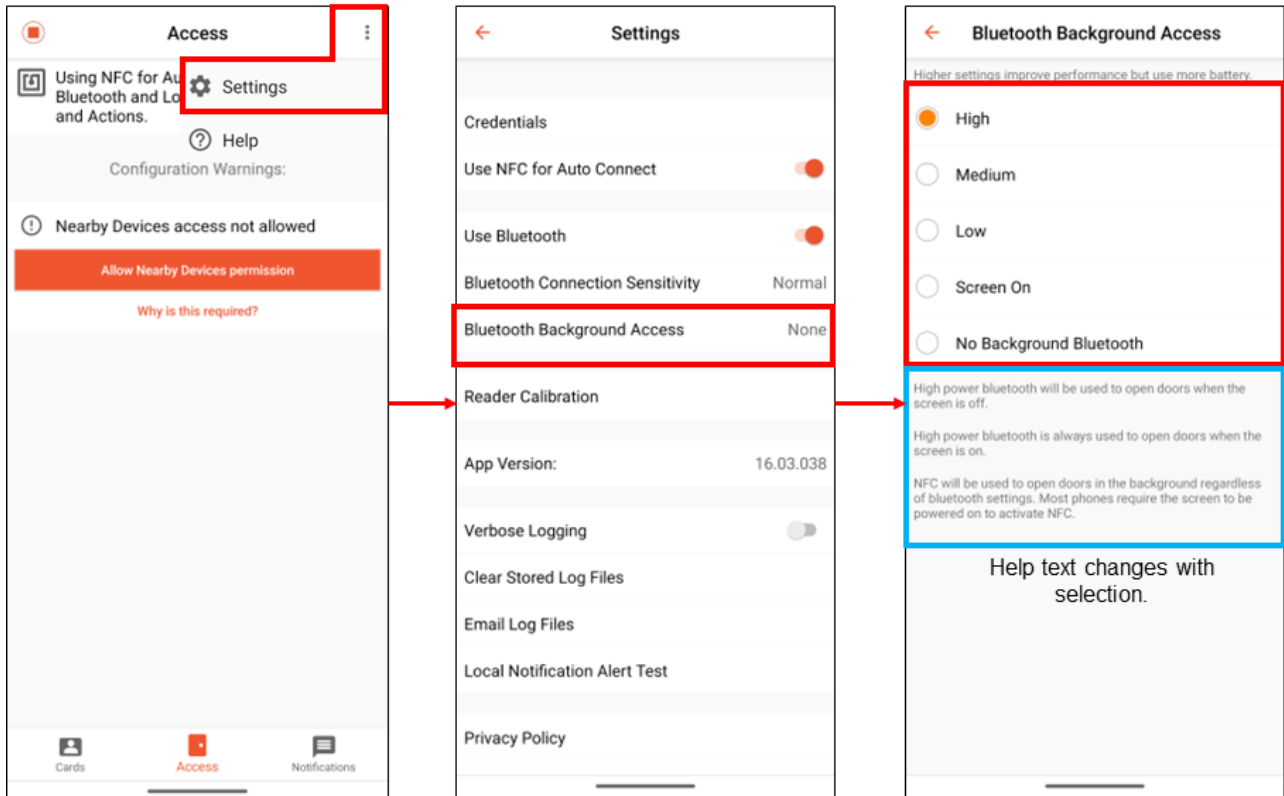
Depending on your phone's Bluetooth settings (see below), you may need to either have your phone on, or open the Mobile Connect App.

When you approach a door, hold your phone within 5 cm of the reader. Your phone will vibrate (depending on your settings), and you should see the reader indicator light turn from red to blue (flashing) and then to green. Once the indicator turns green, access has been granted.

Additional Settings

By default, Gallagher Mobile Connect is set to only use Bluetooth when the app is open. Alternatively, the app can be configured to search for doors even when the app is closed, or the screen is off. Follow these instructions to change this setting:

Android:



Apple:

